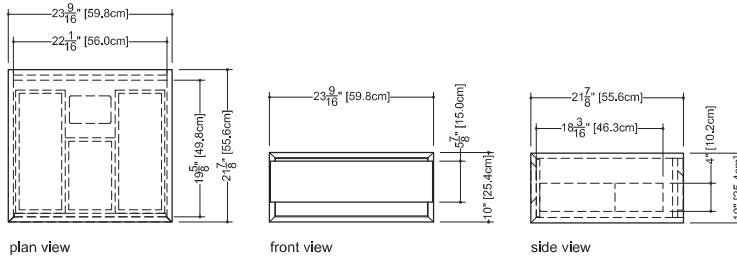


**M Collection**  
Wall-mount vanity  
10" height



# Furniture

**Wall-mount vanity M 2410 WM – 1 drawer – 24" length**  
21 7/8" depth x 23 9/16" length x 10" height – 557 x 598 x 254 mm



**finishes and colors**

**oak**

natural  
white  
wenge  
light grey  
blue steel  
sand  
hemp  
smoked

**walnut**

natural  
chocolate

**matte lacquer\***

white  
light grey  
blue steel  
sand  
hemp

**high gloss lacquer\*\***

white

- 45 degree bevel cuts precluding the need for drawer hardware
  - all natural wood veneer on dimensionally stable MDF core
  - AWI rated level 5 marine grade finish for moisture resistance and durability (industry's highest finishing class)
  - finished vanity interiors in addition to front and sides finished vanity interiors in addition to front and sides
  - solid maple dovetailed drawer
  - divider for storage
  - slow closing ball bearing glides
  - special wall preparation recommendations
- The distance between studs should not exceed 16". Each stud should be reinforced vertically by 2" x 3" wooden studs and horizontally with 2" x 6" wooden studs at a height of 30" all along the width of the vanity.

\*ATTENTION: Vessel sink not recommended with this finish

\*\*ATTENTION: High-Gloss finish on sides and drawer facade only. Bottom and interior in white mat. This finish should only be ordered with an integrated countertop (vessel sink not recommended)

WETSTYLE cannot be held responsible for any technical errors and reserves the right to make revisions without notice.

Approximate measurement.  
The manufacturer accepts 1/4" (6.35mm) variance.

www.WETSTYLE.CA - Montreal - Canada  
Tel. 450.536.9000 - 1 888.536.9001 - Fax. 450.536.0202

